

MACHINING OF HELMETS

SAMPAS

efficient robot solutions

ROBOTIC SYSTEMS
AND AUTOMATION SOLUTIONS



Task:

Machining of helmet domes,
e.g. motorcycle, firefighting
or work safety helmets

- Drilling of holes, openings
- Cutting out the visor section
- Trimming the collar

Our solution:

A robot controls a milling spindle and produces holes of different bore sizes by moving correspondingly. The helmet is placed in the chucking device. The factory worker closes the window by pressing a button and enables the robot for machining. The robot machines the helmet dome. After machining, a pneumatic sliding window is opened by the robot. The factory worker removes the helmet. A second helmet can be machined simultaneously during the loading process.



Your benefit:

- ⊕ Correction interface for the PC for easy amendment of bore hole positions
- ⊕ Any desired contour can be realised
- ⊕ Flexible hole positions and bore diameters
- ⊕ Complete machining in one or two chucks

MACHINING OF HELMETS

SAMPAS

efficient robot solutions

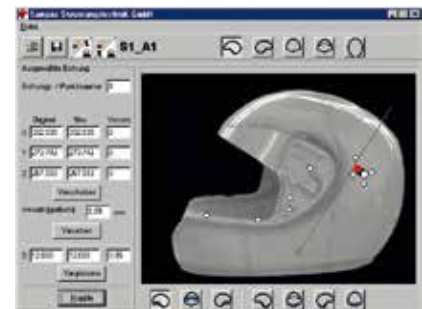
ROBOTIC SYSTEMS
AND AUTOMATION SOLUTIONS

Technical details:

Tool	1 HF milling spindle
Weight	2 500 kg
Dimensions (L x W x H)	4 500 mm x 4 000 mm x 2 800 mm
Robot	KUKA KR30/2
Part variance	up to 100 different hole patterns
Maximum cutting speed	2 m/second

Our services:

- Project planning and management
- Programming
- Electronic and mechanical design
- Commissioning
- Production interfaces
- Manufacture and assembly



EVERYTHING FROM A SINGLE SOURCE

Thanks to our integration into the **PÜTZ GROUP** and the resulting **synergy effects** we are able to offer you not only Robotic systems and automation solutions but also the appropriate testing technology to test surfaces and dimensional accuracy and completeness.

**SAMPAS GmbH takes care
of everything:**

... project planning
and programming,
project management,
production interfaces, activation,
operational approval, production
oversight and much more!

**We look forward
to hearing from you!**

Sampas GmbH

Ernst-Heinkel-Str. 16
71394 Kernen-Rommelshausen
GERMANY

Phone: +49 7151 604033-0
Fax: +49 7151 604033-300
info@sampas.de
www.sampas.de